

Security Management System (SMS)

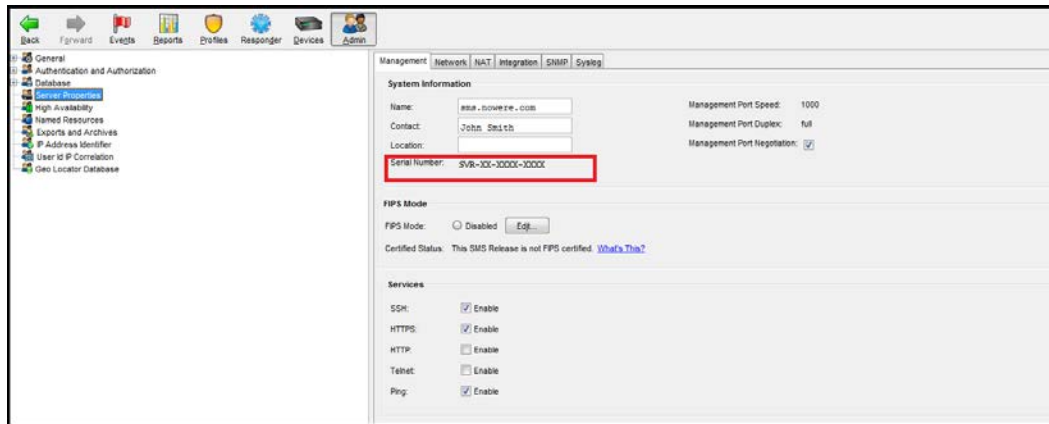
1. From the CLI

- a. Execute the command “get sys”. The output looks like:

```
SMS=> get sys
System contact      (sys.contact   ) = John Smith
System location     (sys.location  ) = UNKNOWN
System model        (sys.model     ) = UNKNOWN
System name         (sys.name      ) = SMS.nowere.com
System platform     (sys.platform  ) = vmware
System serial number (sys.serialNum) = SVR-XX-XXXX-XXXX
```

2. From the SMS Client Software

Access the SMS Server properties page. Click on **Admin**→**Server Properties** and look in the System Information Section.



3. From the label attached to device

You can find the Certificate Number on the white sticker affixed to the SMS.



Intrusion Prevention System (IPS)

1. From the CLI

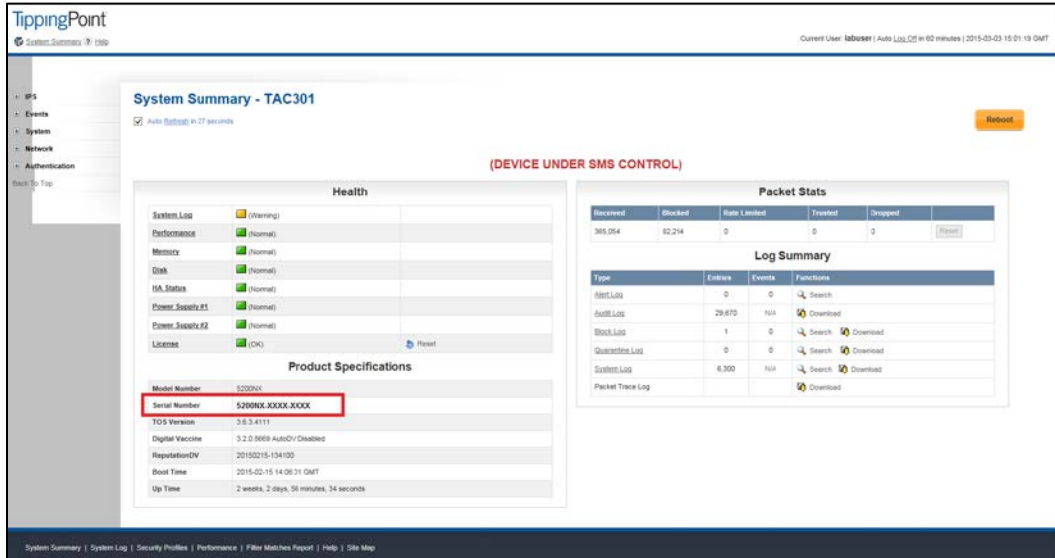
Execute the command “show version”. The output looks like:

```

Serial: 5200NX-XXXX-XXXX
Software: 3.6.3.4111 Build Date: "Jul 12 2014, 11:16:40" Production
Digital Vaccine: 3.2.0.8669
ReputationDV: 20150215-134100
Model: 5200NX
Host Board: D1
Rev: A
  
```

2. From the Local Security Manager (LSM)

Access the IPS via the LSM and look at the Summary Page.



System Summary - TAC301

(DEVICE UNDER SMS CONTROL)

Health

System Log	(Warning)
Performance	(Normal)
Memory	(Normal)
Disk	(Normal)
HA Status	(Normal)
Power_Supply#1	(Normal)
Power_Supply#2	(Normal)
License	(OK)

Product Specifications

Model Number	5200NX
Serial Number	5200NX-XXXX-XXXX
TOS Version	3.6.3.4111
Digital Vaccine	3.2.0.8669 AutoDV/Disabled
ReputationDV	20150215-134100
Boot Time	2015-02-15 14:06:31 GMT
Up Time	2 weeks, 2 days, 58 minutes, 34 seconds

Packet Stats

Received	Blocked	Rate Limited	Tracked	Dropped
365,054	62,214	0	0	0

Log Summary

Type	Entries	Events	Functions
Alert Log	0	0	Search
Alert Log	29,670	N/A	Download
Block Log	1	0	Search Download
Quarantine Log	0	0	Search Download
System Log	6,300	N/A	Search Download
Packet Trace Log			Download

3. From the label attached to device

You can find the Certificate Number on the white sticker affixed to the IPS.



Threat Protection System (TPS)

1. From the CLI

Execute the command “**show version**”. The output looks like:

```
Ips{ }show version
Serial: 440T-XXXX-XXXX
Software: 4.1.0.4472i Build Date: "May 19 2016 18:47:57" Production
Digital Vaccine: 3.2.0.8846
Malware: 3.7.0.1235
Reputation DV: N/A
Model: 440T (IPS)
HW Serial: PR3AFPX00H
HW Revision: B309
Failsafe: 1.3.0.7928
Throughput: 500 Mbps
System Boot Time: Thu Jul 21 15:53:58 2016
Uptime: 1 weeks, 4 days, 21:23:09
```

2. From the Local Security Manager (LSM)

Access the TPS appliance via the LSM and look at Dashboard in the Version Information section.



The screenshot displays the LSM interface for a Trend Micro Threat Protection System (TPS) appliance. The top navigation bar includes 'Monitor', 'Network', 'Policy', and 'Authentication'. The main content area is titled 'Dashboard' and features an 'Auto Refresh' checkbox. Below this, a 'Health' section provides a table of system components and their status:

Component	Status
System Log	Normal
Performance	Normal
Memory	Normal
Disk	Normal
HA	Disabled

Below the health section, the 'Version Information' tab is active, showing a table of system details:

Name	Value
Serial Number	440T-XXXX-XXXX
Software Version	4.1.0.4472i
Build Date	May 19 2016 18:47:57
Model	440T (IPS)
HW Serial	PR3AFPX00H

The 'Serial Number' row in the Version Information table is highlighted with a red border.

3. From the label attached to device

You can find the Certificate Number on the white sticker affixed to the TPS appliance.

