

Security Management System (SMS)

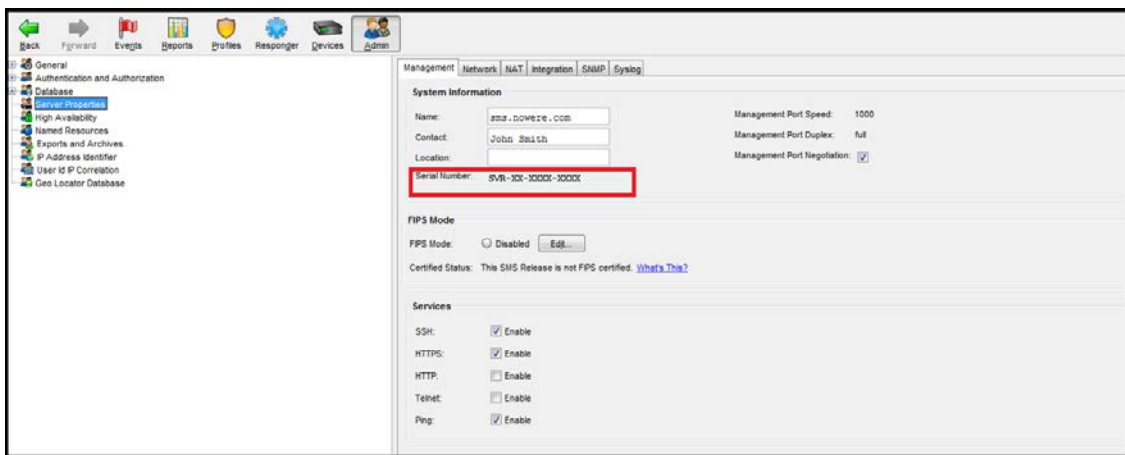
1. From the CLI

- Execute the command “get sys”. The output looks like:

```
SMS=> get sys
System contact      (sys.contact   ) = John Smith
System location     (sys.location  ) = UNKNOWN
System model        (sys.model     ) = UNKNOWN
System name         (sys.name      ) = SMS.nowere.com
System platform     (sys.platform  ) = vmware
System serial number (sys.serialNum) = SVR-XX-XXXX-XXXX
```

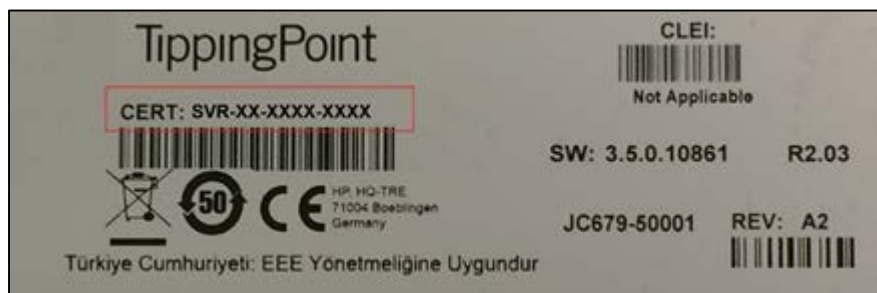
2. From the SMS Client Software

Access the SMS Server properties page. Click on **Admin**→**Server Properties** and look in the System Information Section.



3. From the label attached to device

You can find the Certificate Number on the white sticker affixed to the SMS.



Intrusion Prevention System (IPS)

1. From the CLI

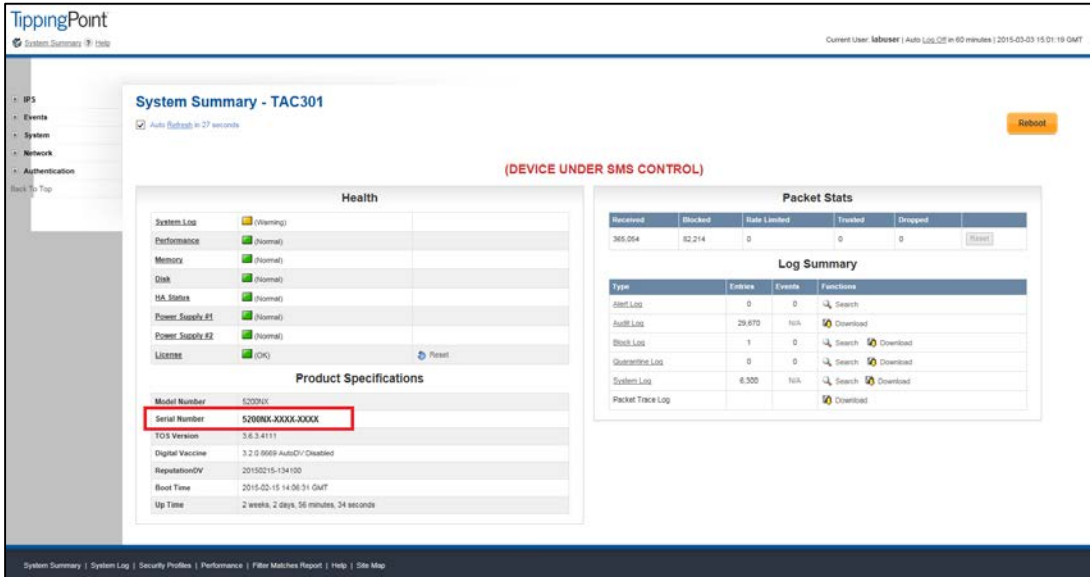
Execute the command “show version”. The output looks like:

```

Serial: 5200NX-XXXX-XXXX
Software: 3.6.3.4111 Build Date: "Jul 12 2014, 11:16:40" Production
Digital Vaccine: 3.2.0.8669
ReputationDV: 20150215-134100
Model: 5200NX
Host Board: D1
Rev: A
    
```

2. From the Local Security Manager (LSM)

Access the IPS via the LSM and look at the Summary Page.



System Summary - TAC301

(DEVICE UNDER SMS CONTROL)

System Log	(Warning)
Performance	(Normal)
Memory	(Normal)
Disk	(Normal)
HA Status	(Normal)
Power_Supply #1	(Normal)
Power_Supply #2	(Normal)
License	(OK)

Received	Blocked	Rate Limited	Treated	Dropped
365,064	82,214	0	0	0

Type	Events	Events	Functions
Alert Log	0	0	Search
Sniff Log	29,870	N/A	Download
Block Log	1	0	Search Download
Quarantine Log	0	0	Search Download
System Log	6,300	N/A	Search Download
Packet Trace Log			Download

Product Specifications

Model Number: 5200NX
Serial Number: 5200NX-XXXX-XXXX
 TDS Version: 3.6.3.4111
 Digital Vaccine: 3.2.0.8669 AutoDV: Disabled
 ReputationDV: 20150215-134100
 Boot Time: 2015-02-15 14:06:31 GMT
 Up Time: 2 weeks, 2 days, 56 minutes, 34 seconds

3. From the label attached to device

You can find the Certificate Number on the white sticker affixed to the IPS.



Next Generation Firewall (NGFW)

1. From the CLI

Execute the command “**show version**”. The output looks like:

```
ngfw{ }show version
Serial: S-S8020F-XXXX-XXXX
Software: 1.1.0.4155 Build Date: "Oct 18 2014 17:32:44" Production
Digital Vaccine: 3.2.0.8584
Model: S8020F
HW Serial: PR38FQ1006
HW Revision: B208
Failsafe: 1.1.0.4111
System Boot Time: Mon Feb 2 22:58:14 2015
Uptime: 4 weeks, 17:46:26
```

2. From the Local Security Manager (LSM)

Access the NGFW appliance via the LSM and look at Dashboard in the Version Information section.



3. From the label attached to device

You can find the Certificate Number on the white sticker affixed to the NGFW appliance.



Threat Protection System (TPS)

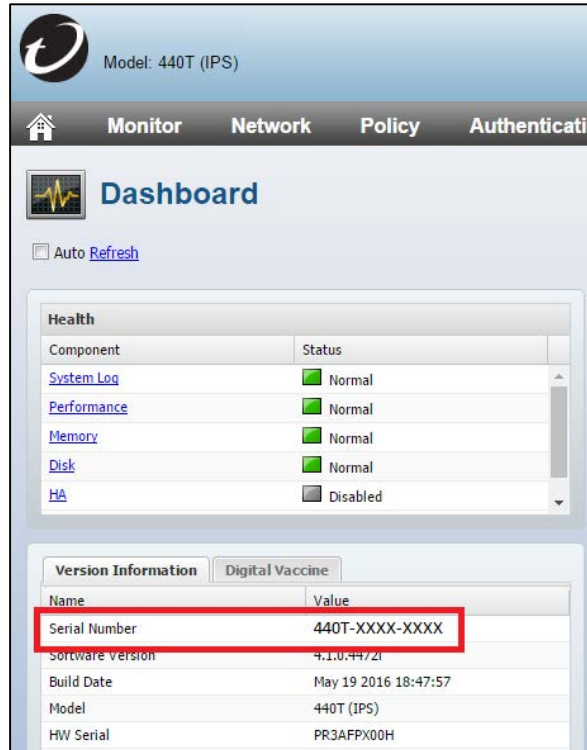
1. From the CLI

Execute the command “**show version**”. The output looks like:

```
Ips{ }show version
Serial: 440T-XXXX-XXXX
Software: 4.1.0.4472i Build Date: "May 19 2016 18:47:57" Production
Digital Vaccine: 3.2.0.8846
Malware: 3.7.0.1235
Reputation DV: N/A
Model: 440T (IPS)
HW Serial: PR3AFPX00H
HW Revision: B309
Failsafe: 1.3.0.7928
Throughput: 500 Mbps
System Boot Time: Thu Jul 21 15:53:58 2016
Uptime: 1 weeks, 4 days, 21:23:09
```

2. From the Local Security Manager (LSM)

Access the TPS appliance via the LSM and look at Dashboard in the Version Information section.



The screenshot shows the web interface of the Threat Protection System (TPS) appliance. The top navigation bar includes "Monitor", "Network", "Policy", and "Authentication". The main content area is titled "Dashboard" and includes an "Auto Refresh" checkbox. Below the dashboard is a "Health" section with a table showing the status of various components:

Component	Status
System Log	Normal
Performance	Normal
Memory	Normal
Disk	Normal
HA	Disabled

Below the health section is the "Version Information" section, which is currently selected. It displays a table of system details:

Name	Value
Serial Number	440T-XXXX-XXXX
Software Version	4.1.0.4472i
Build Date	May 19 2016 18:47:57
Model	440T (IPS)
HW Serial	PR3AFPX00H

The "Serial Number" row in the Version Information table is highlighted with a red box.

3. From the label attached to device

You can find the Certificate Number on the white sticker affixed to the TPS appliance.

